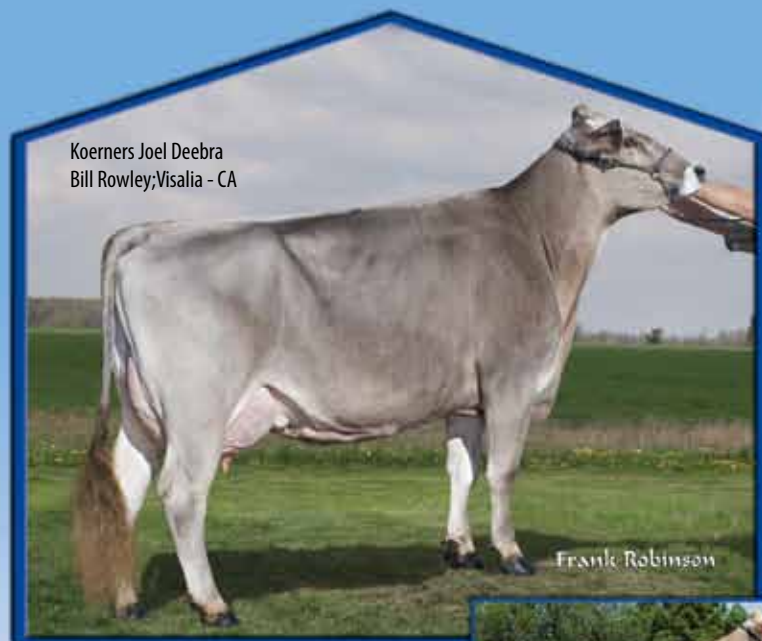


AltaJOEL

11BS0644 RED BRAE DAA ACE **JOEL***TM VG-86

Ace x Prelude x Jetway

aAa 216453 DMS 561,456



Koerners Joel Deebra
Bill Rowley;Visalia - CA

Frank Robinson

- ▲ Stature Improver
- ▲ Breed Leader in Rear Udder Height
- ▲ 3 Generations of EX Dams



PPR +126 84 dtrs /65 hrds
Milk +784 +31 P +0.02% P 84% R
+26 F -0.02% F
CM\$ +222 NM\$ +184 SCS +2.93 PL +0.2

PTA Type +0.3 71% R 18 dtrs /11 hrds

Dam: Red Brae Daa Prelude Jodi EX-90

2-04 354d 2x 21,740m 4.4% 950f 3.3% 721p

MGD:Red Brae Daa Jetway Jad-ET EX-90

7-06 365d 2x 34,660m 4.2% 1445f 3.0% 1041p

MGGD:m D A A Jade Jaqi EX-90

06-02 365d 2x 22,980m 4.2% 969f 3.6% 827p

4 Yr Old All American -1991

5 Yr Old Nom All American -1992

Red Brae Sta Joel Nevea, Red Brae Farm; Muscoda - WI

AltaPERCY

11 BS0673 SUN-MADE GARBRO **PERCY** ET *TM TM

Denver x Emerald x Collection

- ▲ Excellent Cow Family - Sire & Dam
- ▲ High Net Merit
- ▲ One of the top PPR sire of the breed

Dam of PERCY: Triangle Acres Po Poem-ET VG-86

2-08 305d 2x 27,220m 4.2% 1133f 3.5% 957p

MGD: Triangle Acres Coll Polly EX-92

MGGD: Triangle Acres Patty EX-90 2E



PPR +108 45 dtrs /24 hrds
Milk +841 +22 P -0.03 % P 81% R
+28 F -0.02 % F
CM\$ +236 NM\$ +244 SCS +2.98 PL +1.6

PTA Type +0.7 70% R 12 dtrs /7 hrds

Brown Swiss
April 2011

April 2011 Proven Brown Swiss Sires - USDA GENOMIC Evaluations



Price	Sire Code	Name	PPR	Milk	Protein lbs.	Protein %	Fat lbs.	Fat %	Rel	Dtrs/Hrds	SCS	PL	NM\$	aAa	DMS	Pedigree
	11BS00594	AltaPRONTO	+129	+500	+16	-.01	+18	-.01	98%	12364/4630	2.79	5.4	+386	561432	561,456	ENSIGN x EMORY
	11BS00644	AltaJOEL	+126	+784	+31	+.02	+26	-.02	84%	84/65	2.93	0.2	+184	216453	561,456	ACE x PRELUDE
	11BS00673	AltaPERCY	+108	+841	+22	-.03	+28	-.02	81%	45/24	2.98	1.6	+244	426531	246	DENVER x EMERALD
	11BS00635	AltaBON FIRE	+41	+650	+18	-.01	+15	-.05	90%	200/161	3.26	-0.4	+23	264153	126,123	PRELUDE x EVEN

Sires Feature = April 2011 Interbull

April 2011 Proven Brown Swiss Sires - BSCBA Linear Type Traits

Sire Code	Name	PTAT	Rel%	Dtrs/Hrds	Stat.	Dairy Strength	Dairy Form	Rump Angle	Thurl Width	RLRV	RLSV	Foot Angle	F.Ud Att.	R.Ud Height	R.Ud Width	Udder Clef	Udder Depth	Teat Plcmt.
11BS00594	AltaPRONTO	+0.4	97.00	2852/1743	-0.4	-0.8	+0.5	S1.0	-0.5	S0.4	P1.1	S1.0	+1.1	+1.1	+0.7	+1.3	S0.9	W0.2
11BS00644	AltaJOEL	+0.3	71.00	18/11	+2.0	0.0	+0.8	S0.4	+0.3	S0.1	P0.1	S0.5	-0.1	+2.2	+1.5	+1.1	S1.0	C0.5
11BS00673	AltaPERCY	+0.7	70.00	12/7	-0.7	-0.6	+1.1	H0.4	-0.2	S0.3	S0.4	0.0	+0.2	+1.4	+0.9	+0.3	0.0	C0.7
11BS00635	AltaBON FIRE	+0.2	80.00	132/109	+0.4	-0.7	+0.8	S1.4	-0.3	S0.4	S0.7	L0.5	-0.4	+0.2	+0.2	-0.7	D0.8	C0.1

Grandam of **AltaCD**
Olsons Brinks Melody E90
Olson Dairy, Spring Valley, MN
Photo: Kathy De Bruin

11BS0680
OLSONS DYNASTY
AltaCD ET *TM

AltaCD Born: 12/12/2005

HILLTOP ACRES EN DYNASTY ET

X

OLSONS MELODYS MUSIC ET VG87 E90

4-01 365D 30,150M, 5.1F, 1,351lbs. 3.5P 1049

X

OLSONS BRINKS MELODY 2E91

6-02 309D 34,560M, 5.5F 1,889lbs. 3.2P 1,121

PPR 98

Milk +592 lbs +20P +0.00% P 67% R

+30F +0.03% F

CM\$ +190 NM\$ +175 SCS +2.96 PL +1.1

PTA Type +0.9 55% R Apr 2011 Genomic USDA Evaluation

Grandam of AltaPAYCHECK:
Oak Forest Jetway Crystal TM EX-93 2E
2001 Iowa State Fair Reserve Grand Champion

Genomic Sires- USDA Genomics April 2011



11BS0677

NORTH CREEK PAYCHECK *TM

AltaPAYCHECK

AltaPAYCHECK Born: 7/29/2005

TRIANGLE ACRES PO PAYOFF-ET TM

X

OAK FOREST PRONTO CHRIS-ET VG-87

2-01 365D 3x 21,850M 3.6F 796 lbs. 3.3P 716

X

OAK FOREST JETWAY CRYSTAL TM EX-93 2E

5-09 362D 2x 42,600M 4.4F 1895 lbs. 3.4P 1432

PPR 60

Milk +406 lbs +13P +0.01% P 64% R

+18F -0.04% F

CM\$ +69 NM\$ +60 SCS +2.88 PL -0.4

PTA Type +0.7 56% R Apr 2011 Genomic USDA Evaluation



Your Alta Representative:



Create Value ▲ Build Trust ▲ Deliver Results

www.altagenetics.com